

INSERVICE TRAINING RECORDINGS 14th AUGUST 2023

Longniddry PS - cog-tastic emotions!

[@EmotionWorksCIC](#)



Thanks very much really informative 🥰



Williamston Primary @williamstonps
In service day training morning at
[@EmotionWorksCIC](#)

North Kelvinside Prim... · 1d ...

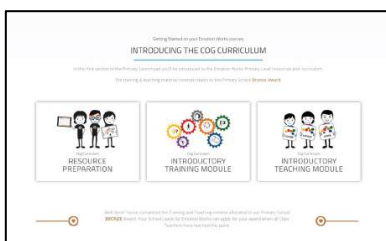
[@EmotionWorksCIC](#) Staff enjoying their inservice day Emotion Works training. Emotional literacy is so important for our young people!



1

RECORDING 1: GETTING STARTED WITH THE COG CURRICULUM

- PART 1**
00:05 A practical introduction to the Emotion Cogs and demonstration of how they work together using resources from the Classroom Starter Pack
- PART 2**
16:36 The Primary Launchpad web page & the 4 Stages of the EW Journey
An inspiring example of Emotion Works in Practice in a Primary School setting
- PART 5**
27:42 Resource Preparation – Training & Teaching Resources & Staff Reference Tools
Cog Model & Progression Training animation
- PART 4**
46:09 Practical Example of displays & resources across Lower, Middle & Upper classes
Introductory Teaching Material overview
- 58:35** Practitioner Support Page & Service



2

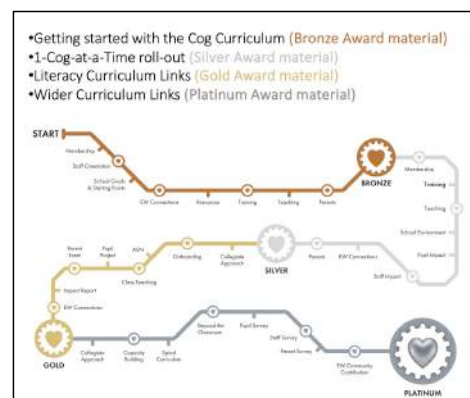
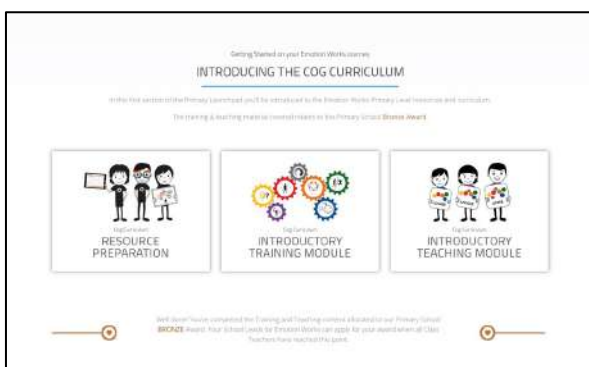
A practical introduction to the Emotion Cogs and demonstration of how they work together using resources from the Classroom Starter Pack (using an example of a recently experienced holiday emotion)



RECORDING 1 (Getting Started) Part 1

3

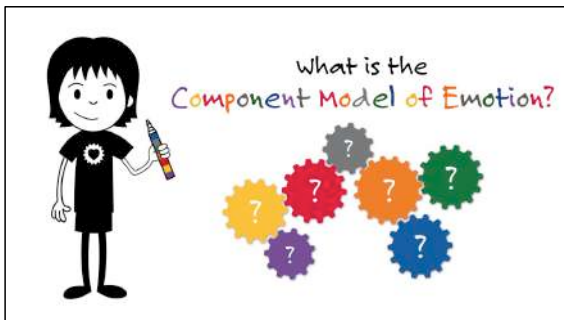
The Primary Launchpad web page & the 4 Stages of the EW Journey, including an inspiring example of Emotion Works in Practice in a Primary School setting



RECORDING 1 (Getting Started) Part 2

4

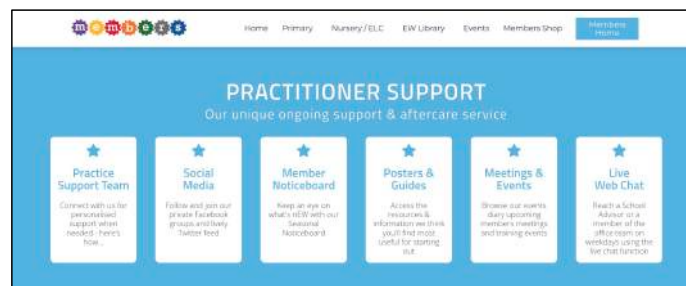
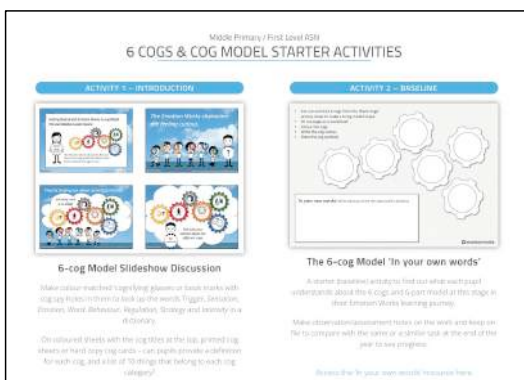
- Resource Preparation –
- Training & Resources & Staff Reference Tools
- Locating Teaching Resources
- Cog Model & Progression Training animation



RECORDING 1 (Getting Started) Part 3

5

- Practical Example of displays & resources across Lower, Middle & Upper classes
- Introductory Teaching Material
- Practitioner Support Page & Service



RECORDING 1 (Getting Started) Part 4

6